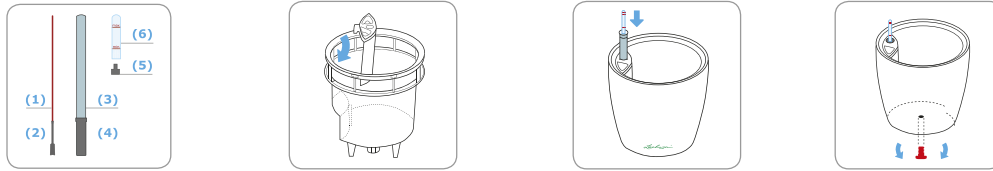
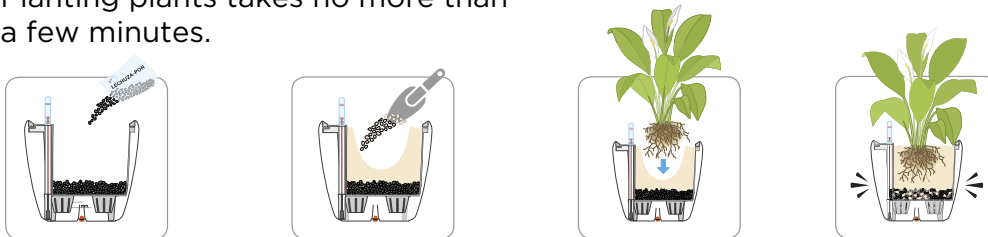


LECHUZA Planting Instructions

- 1.** The assembly of the LECHUZA planter takes no more than a few minutes.



- 2.** Planting plants takes no more than a few minutes.



- 3.** How do you care for plants in flower pots?

After the transplant, you water the plant from above for the first 3 weeks, as usual. During this time, it passes the roots into the wet zone. To check whether it is possible to switch to the self-watering system, raise the inner pot and you will see the roots or pour water into the self-watering system in the middle between the “min” and “max” marks. If after a few days the water level decreases, you can switch to self-watering. If not, drain the system and continue watering in the usual way from above.

When you switch to self-watering, the plant will drink as much water as necessary. When the indicator drops to a minimum, you need to wait a certain time. For table plants, up to two days; for floor plants, up to a week. This is because there is still moisture in the ground. After the appropriate wait time, refill the water. Watering from above and using the self-watering system at the same time is not recommended.

- 4.** Preparation for placing flowerpots indoor and outdoor

To place the pots on the street, unscrew the red screw at the bottom of the pots. This will allow excess rainwater to drain and the plant will not become overly wet. When placing the pots inside, the red screw must be screwed in.

